

# PROLINETOOLS®

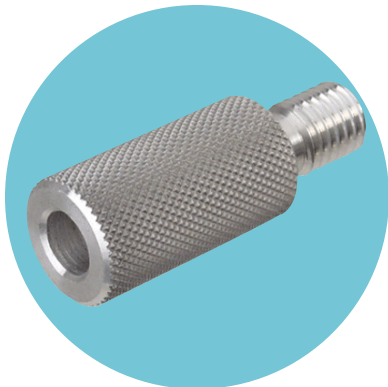
## Portable Router PL-500

The ProLine Portable Router features a 1/3 HP high-torque continuous duty enclosed motor with a cooling fan. The motor and pulley bearings are lubricated and do not require additional maintenance. The base is predrilled for mounting on a hard surface or pedestal.

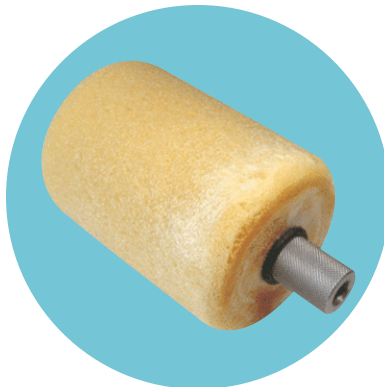
- 11" shaft
- Includes handles that make adjustments easy; including rotation, angled positions, and up to seven inches of height adjustments
- Synchronous RPM 3600
- 115V single phase 60Hz
- Unit weight: 32 lbs
- Uses standard 1/2" threaded accessories
- 5/8" threaded accessories may be used with the PL-500 with the use of the router adaptor PL-1109
- Six-foot power cord included
- Meets UL, CSA, and CE standards



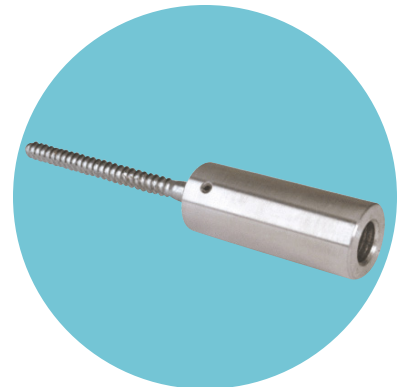
## Accessories



**Router  
Adaptor**  
PL-1109



**Foam  
Finisher**  
PL-100



**Tycro  
Cone Adaptor**  
PL-1138